

## SOICW-20 Socket to DIP-20 Adapter (5.4 mm body, 1.27 mm pitch)

### Product Highlights

RoHS Compliant  
Comes fully assembled  
Immersion Gold PCB Finish  
Gold plated DIP pins

### Specifications

Top-side socket type:

PCB construction:

PCB operating temperature range:

PCB reflow maximum temperature:

PCB Assembly standard:

Bottom Side DIP pin spacing:

Proto-Advantage PA-SOCKET-SOICW-20-1.27

FR-4 UL94V-0

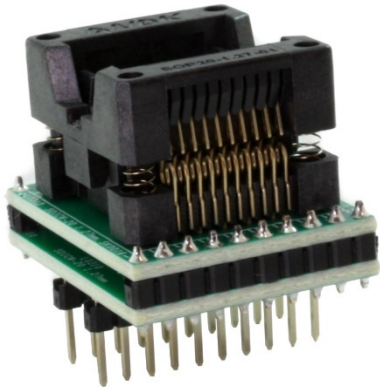
-40°C to +130°C

+260°C

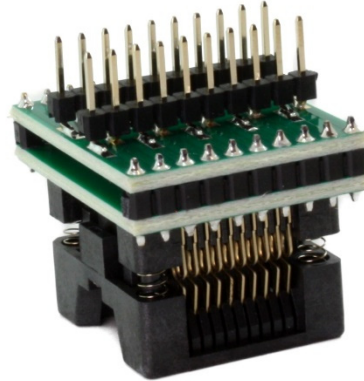
IPC-A-610 Class II

0.1" (2.54mm) pitch, 0.3" (7.62mm) row-to-row

### Product Images



**Image 1:** Top View of Socket Adapter



**Image 2:** Bottom View of Socket Adapter

# Top Side Socket Drawing

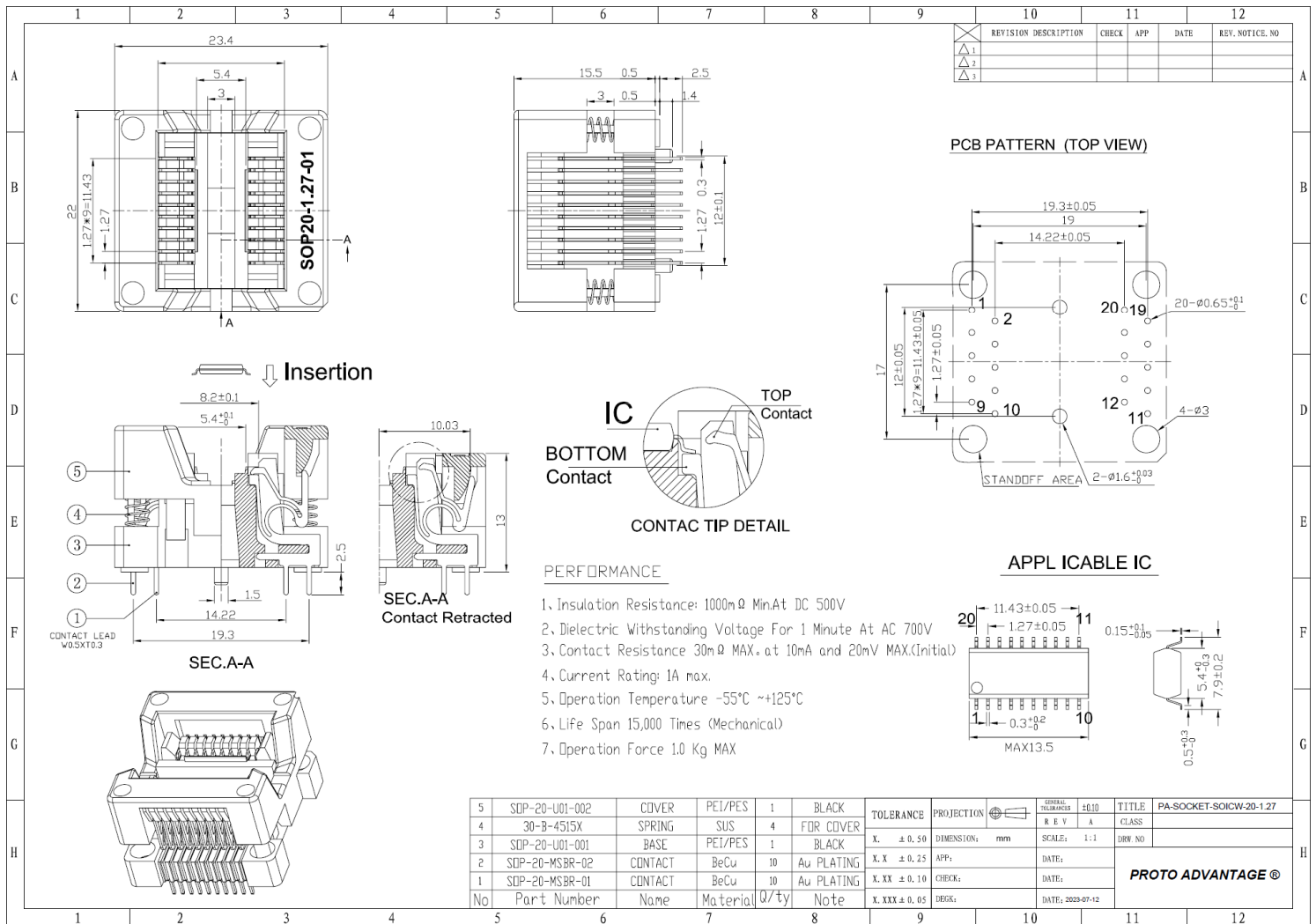


Image 3: Proto-Advantage PA-SOCKET-SOICW-20-1.27 Socket Drawing