

## SOT-23, 3 mm, 4 mm to SIP Adapter Complex Circuits - 6 pin

### Product Highlights

Immersion Gold Finish  
Double Sided  
RoHS 3 and REACH Compliant

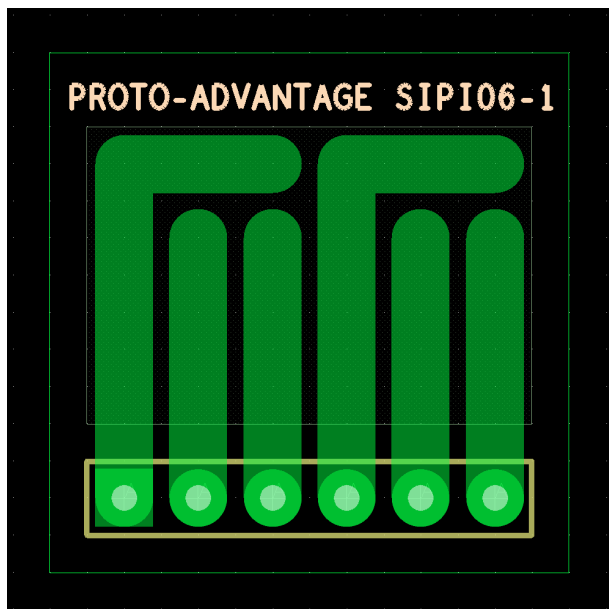
### Specifications

Dimensions:	0.7" x 0.7" x 0.0625"
PCB construction:	FR-4 UL94V-0
PCB operating temperature range:	-40°C to +130°C
PCB reflow maximum temperature:	+260°C

### Description

Single-in-line package carrier. Fits 3-terminal (SOT-23, and 3mm and 4mm inductors) as well as 0805, 1206, and 1210 surface mount components. For Complex SMT Applications. This board uses our through-hole male right angle headers, Proto-Advantage part number: HDR100IMP40M-G-RA-TH, which are included.

### Drawing



Shown with 1.27mm grid. Traces are 2.00mm width. Air gap between traces is 0.54mm.