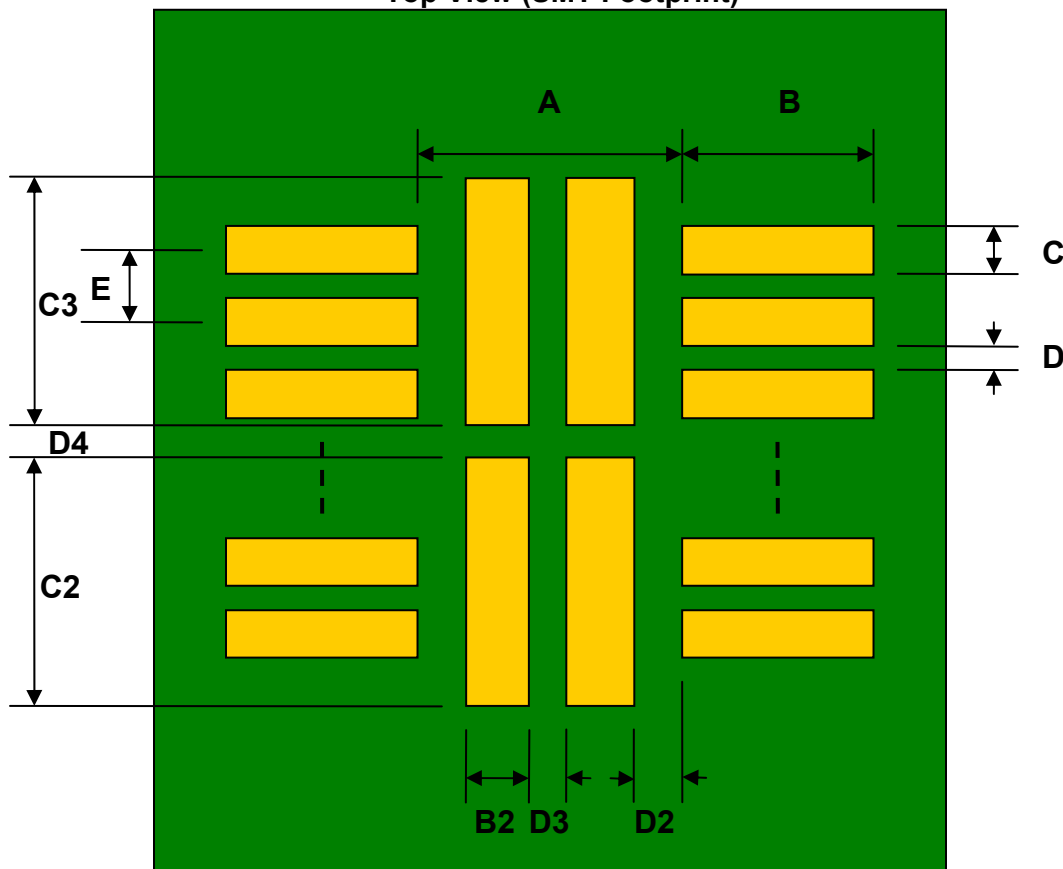


## MLP-12/DFN-12 to DIP-16 SMT Adapter (0.8 mm pitch, 5 x 4.5 mm body, 4 center pads 2.1x1mm & 1.65x1mm)

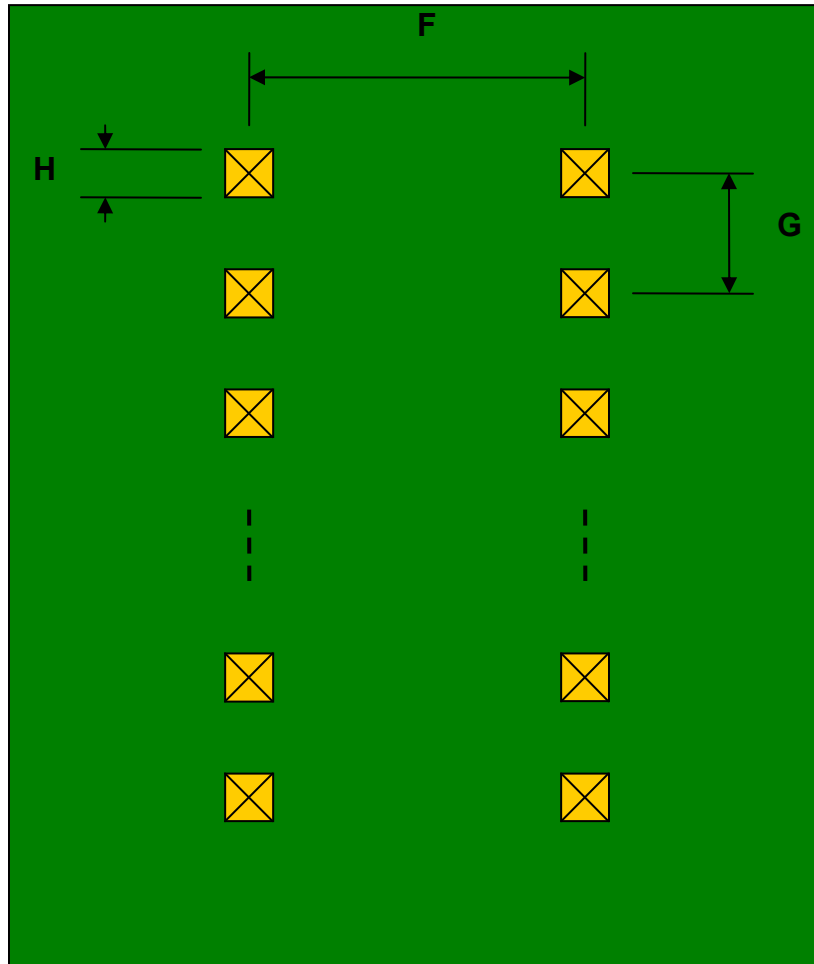
REF.	DIMENSIONS					
	mm			inches		
	MIN.	TYP.	MAX.	MIN.	TYP.	MAX.
A		3.50				
B		0.65				
C		0.40				
B2		1.00				
C2		2.10				
C3		1.65				
D		0.40				
D2		0.50				
D3		0.50				
D4		0.70				
E		0.80				
F					0.600	
G					0.100	
H					0.025	

Top View (SMT Footprint)



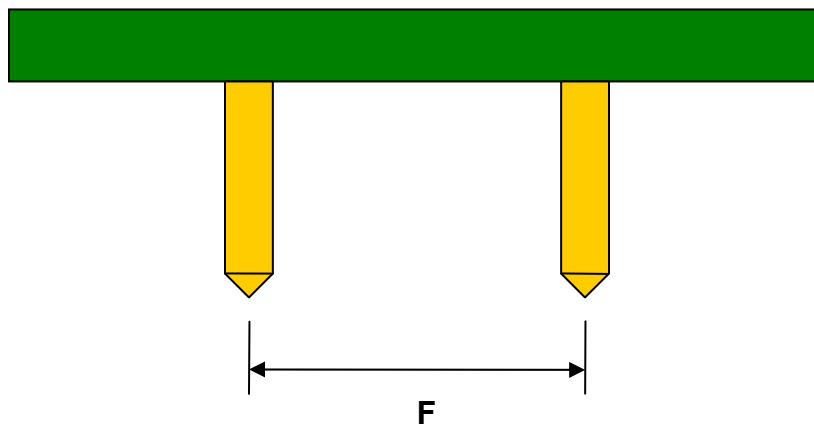
(Representative drawing only - not to scale)

### Bottom View (DIP Pins)



(Representative drawing only - not to scale)

### Side View (DIP Pins)



(Representative drawing only - not to scale)