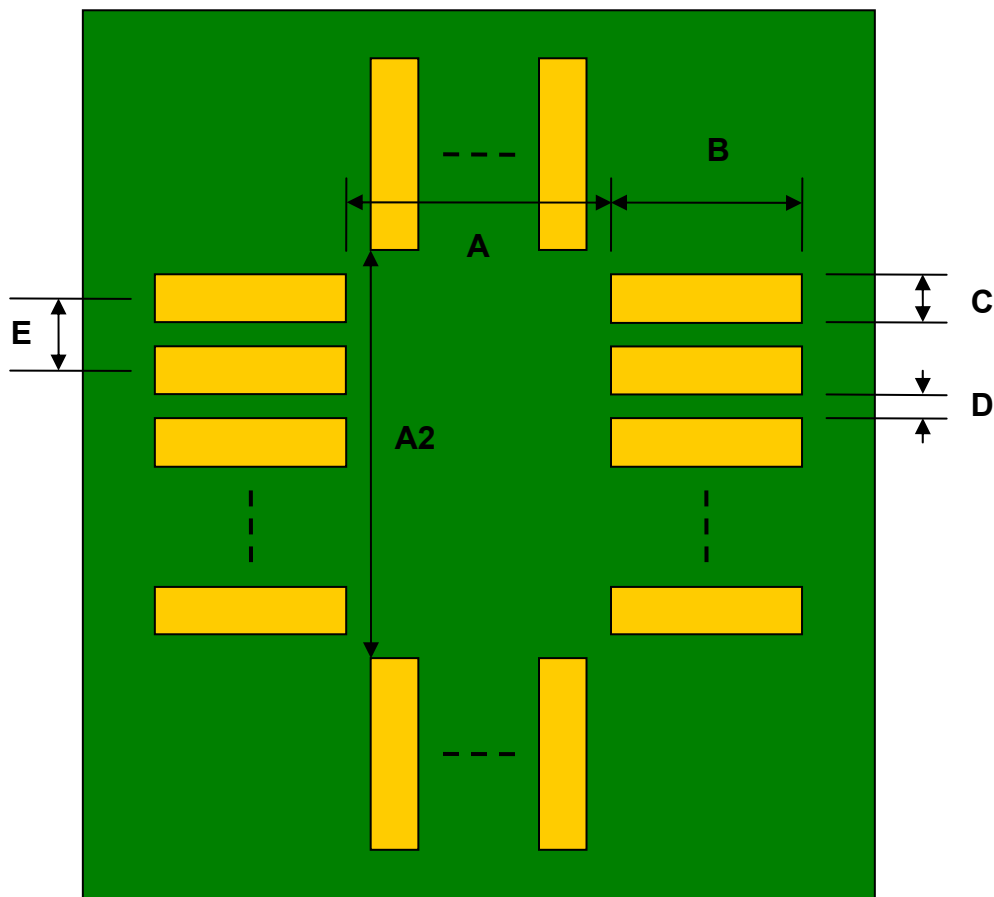


## LGA-12 to DIP-12 SMT Adapter (0.8 mm pitch, 4.4 x 2.4 mm body)

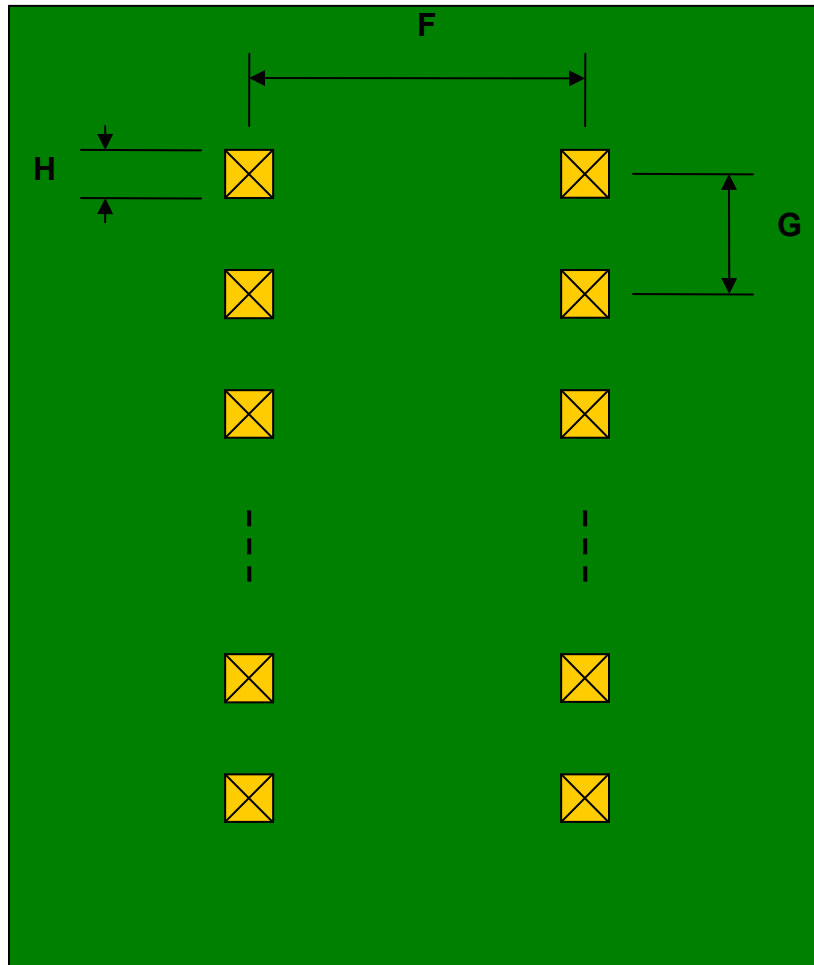
REF.	DIMENSIONS					
	mm			inches		
	MIN.	TYP.	MAX.	MIN.	TYP.	MAX.
A		1.10				
A2		2.70				
B		0.50				
C		0.50				
D		0.30				
E		0.80				
F					0.300	
G					0.100	
H					0.025	

Top View (SMT Footprint)



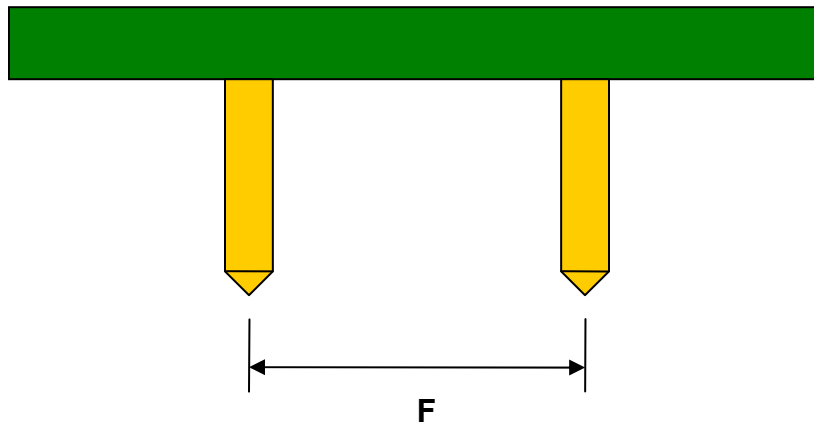
(Representative drawing only - not to scale)

### Bottom View (DIP Pins)



(Representative drawing only - not to scale)

### Side View (DIP Pins)



(Representative drawing only - not to scale)