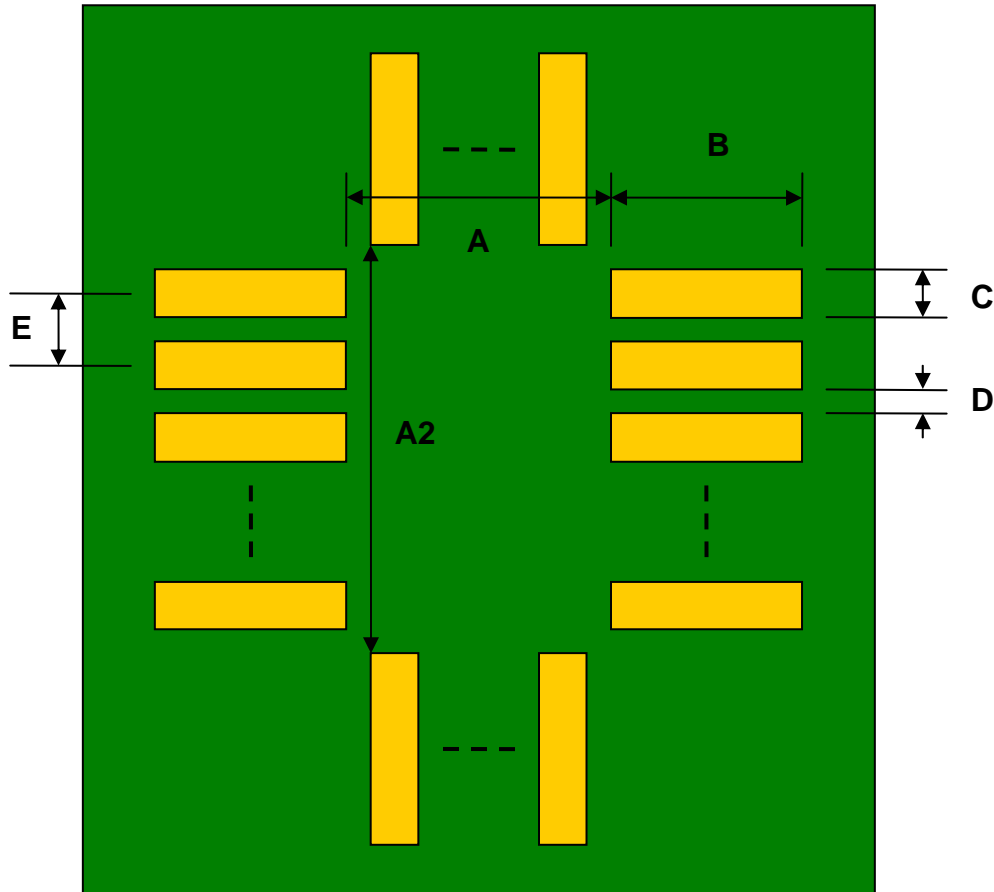


QFN-10 to DIP-10 SMT Adapter (0.4 mm pitch, 1.8 x 1.4 mm body)

REF.	DIMENSIONS					
	mm			inches		
	MIN.	TYP.	MAX.	MIN.	TYP.	MAX.
A		0.60				
A2		1.00				
B		0.60				
C		0.20				
D		0.20				
E		0.40				
F					0.600	
G					0.100	
H					0.025	

Top View (SMT Footprint)



(Representative drawing only - not to scale)

Bottom View (DIP Pins)



(Representative drawing only - not to scale)

Side View (DIP Pins)



(Representative drawing only - not to scale)