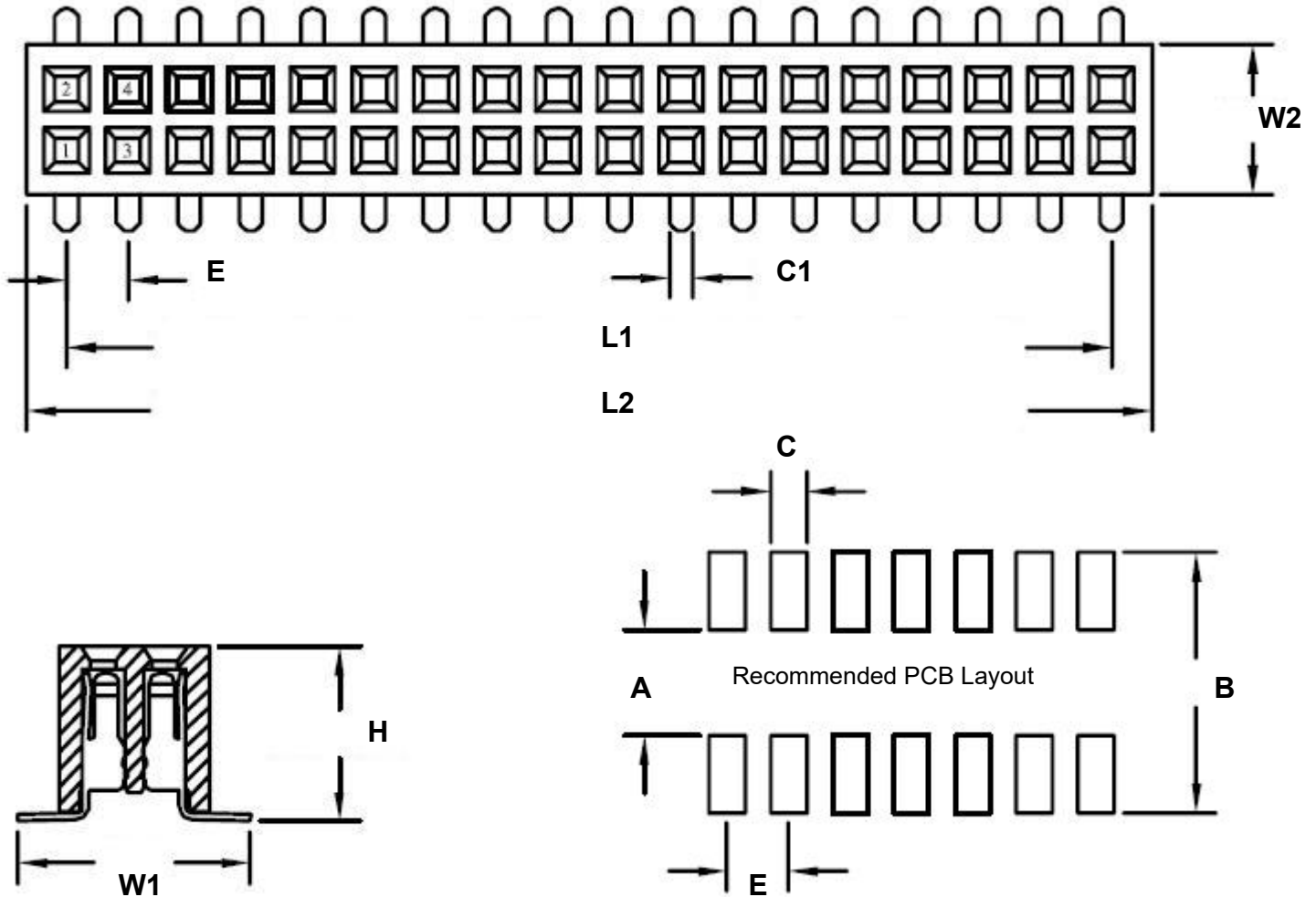


**1.00 mm 80 pin Vertical Female Header Surface Mount Gold**

REF.	DIMENSIONS					
	mm			inches		
	MIN.	TYP.	MAX.	MIN.	TYP.	MAX.
A		1.20				
B		4.80				
C		0.51				
C1		0.30				
E		1.00				
H		2.25				
L1		39.00				
L2		40.40				
W1		3.80				
W2		2.50				



## **SPECIFICATIONS**

Plastic body construction: PA6T plastic (320°C melting point)

Pin construction: Gold plated (brass pin, with 1um gold over 50um nickel)

Operating temperature range: -40°C to +130°C

Reflow maximum temperature: +260°C