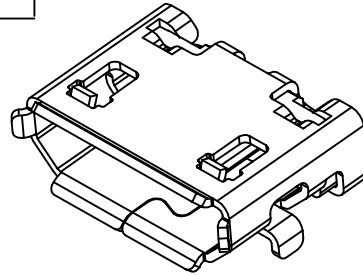
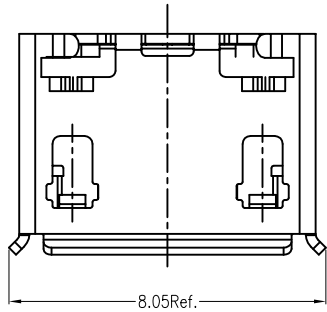


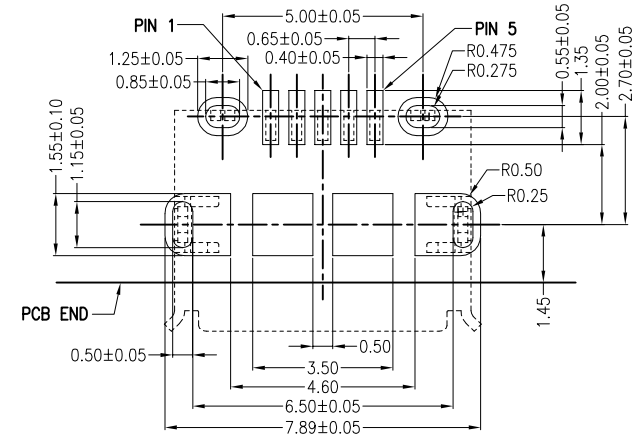
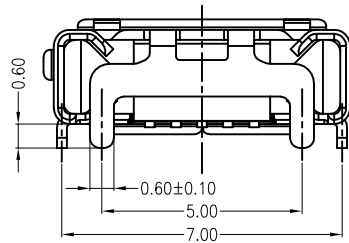
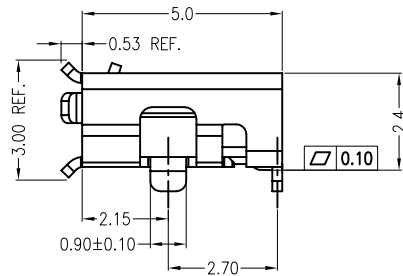
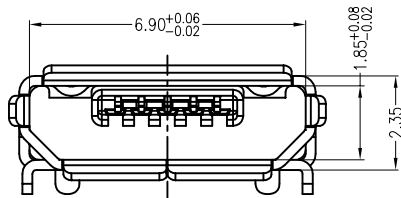
PART NUMBER
10118194-*

Item	Title	Q'TY
1	Shell	1
2	Terminal	5
3	InsertMolding	1

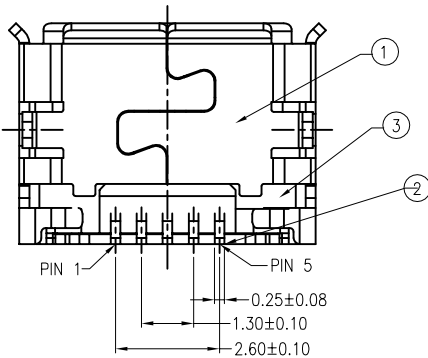


NOTES:

- MATERIAL:**
HOUSING: HIGH THERMOPLASTIC RESIN, UL94V-0, COLOR: BLACK
TERMINAL: COPPER ALLOY
SHELL: STAINLESS
- FINISH:**
CONTACT AREA: SEE PRODUCT NUMBER DESCRIPTION
CONTACT SOLDER AREA: GOLD FLASH
SHELL: MATTE TIN PLATED
UNDER NICKEL PLATED ALL OVER.
- PRODUCT SPECIFICATION:** GS-12-641.
- PACKAGING SPECIFICATION:** GS-14-2180.
- THE "LF" MEANS FOR LEAD FREE AND CAN WITHSTAND EXPOSE TO 260°C PEAK TEMPERATURE FOR 10 SECONDS IN IR REFLOW PROCESS.



REFERENCE PCB LAYOUT



PRODUCT NUMBER DESCRIPTION
10118194-000XLF

- 1-CONTACT AREA: 0.76um AU
- 2-CONTACT AREA: GOLD FLASH

mat'l. code		surface ASME Y14.5 ✓		tolerance ASME Y14.5		projection ⊕		product family USB	
ltr		ecn no		dr		date		tolerances unless otherwise specified	
A		/		LS		10/21/11		angles	
B		BLX-N-23501		LQ		3/11/16		linear	
								.X±0.38	
								.XX±0.25	
								.XXX±0.10	
								X°±2°	
				dr		JASON HSU 05/21/11		scale	
				enrg		JASON HSU 05/21/11		MM	
				chr		JASON HSU 05/21/11		FCI	
				appd		GARY HSIEH 05/21/11		dwg no	
								sheet 1 of 1	
								10118194	
								size	
								A4	
								type	
								CUSTOMER Drawing	
sheet index		revision sheet		B		1			